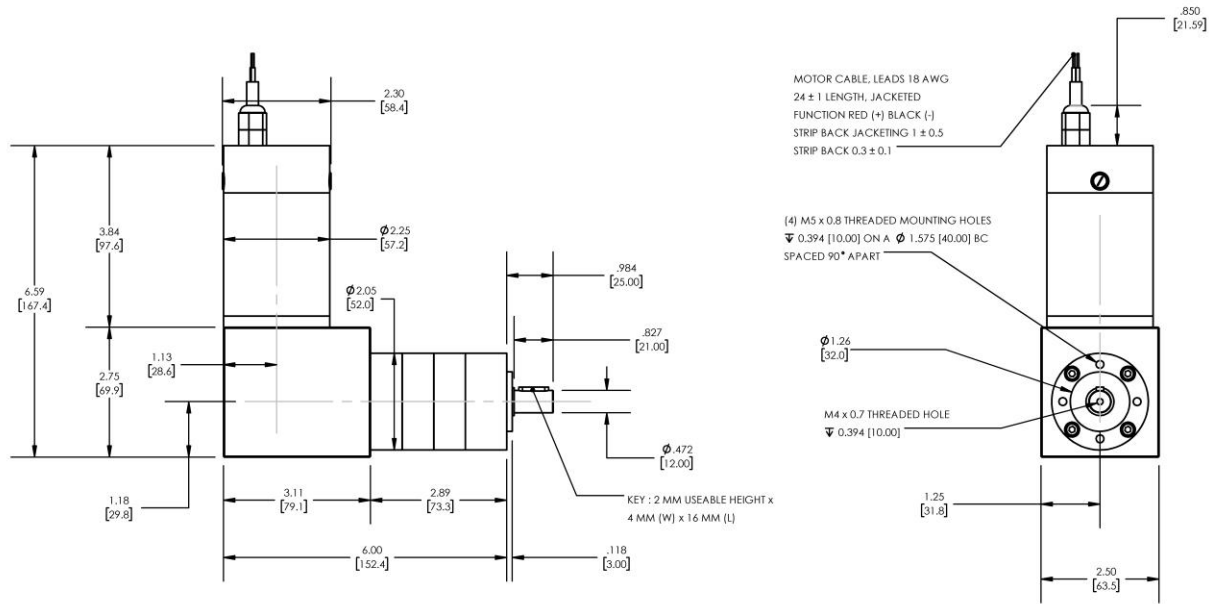




REVERSIBLE BRUSHED DC RIGHT-ANGLED GEARMOTOR

Model Number:

MMP TM57-48V GRA52-100



DIMENSIONS ARE INCHES [MM] UNLESS OTHERWISE STATED

PLANETARY GEARMOTOR OUTPUT PARAMETERS:	VALUE	UNITS	TOLERANCE
Gearhead Ratio (exact)	99.50 : 1		
Gearhead Shaft Output Speed (at full-load)	37	RPM	MAX
Gearmotor Rated Continuous Torque	135	In-Lbs	MAX
Gearmotor Rated Peak Torque	386++	In-Lbs	----
Gearhead Standard Backlash	48	Arc Minutes	MAX
Gearhead Efficiency	70%	----	----
Output Shaft Radial Load Capacity	102	Lbs	MAX
Output Shaft Axial Load Capacity	34	Lbs	MAX
Gearmotor Total Weight	6.1	Lbs	MAX

++ All Peak Torque values are dependent upon duty. Contact our sales office for details.

DC MOTOR PERFORMANCE PARAMETERS:	VALUE	UNITS	TOLERANCE
Rated DC Voltage	48	DC VOLTS	----
Rated Continuous Current	2.7	AMPERES	----
No-Load Speed	5000	RPM	MAX
Rated Speed	3693	RPM	+/- 15%
Rated Continuous Power Out	84	WATTS	+/- 15%
Rated Continuous Torque	31	OZ-IN	----
Peak Torque (motor only)	89	OZ-IN	----
No-Load Current	0.32	AMPERES	MAX
Back EMF Constant (Ke)	9.6	V/KRPM	+/- 10%
Torque Constant (Kt)	13.0	OZ-IN/AMP	+/- 10%
DC Armature Resistance	4.68	OHMS	+/- 15%
Armature Inductance	6.57	mH	+/- 15%
Armature temperature	155	DEG. C	MAX

NOTES:

- NEMA MOUNTING FLANGE OPTION AVAILABLE - [FOLLOW THIS LINK FOR DETAILS](#)

MIDWEST MOTION PRODUCTS, INC

DESIGN, MANUFACTURING & DISTRIBUTION - MOTION CONTROL EQUIPMENT

www.midwestmotion.com

email: sales@midwestmotion.com